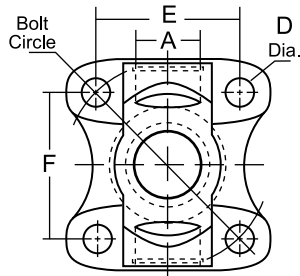
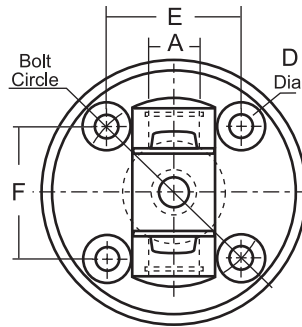
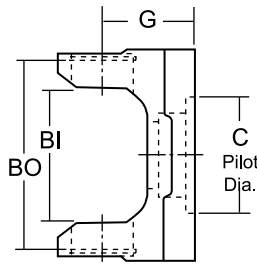


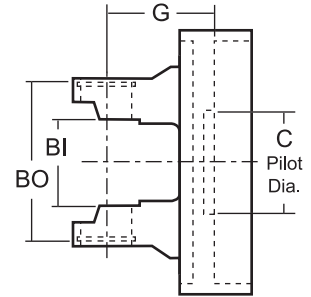
# New Flange Yokes Available from



Type 1



Type 8



RDL Part No.	Yoke Type	A Bearing Dia.	BI / BO U-Joint Lockup	C Pilot Dia.	Bolt Hole Dimensions			G CL to Flange End	Bolt Circle
					Holes	D	E		

**430 Series (Staked-In Applications)\***

**Use RDL Kit - 430-14**

414-2-3350	Type 1	1.066	1.780-(I)	2.163-F	4	.490	3.200	3.200	2.125	4.500	<i>*Jeep Bolt Pattern</i>
414-2-3351	Type 8	1.066	1.780-(I)	2.163-F	4	.490	2.780	2.780	2.125	3.938	<i>*Jeep Bolt Pattern</i>

**1310 Series (Conversion Applications)**

**Use RDL Kit - K153**

R2-2-3200	Type 1	1.063	3.217-(O)	2.163-F	4	.490	3.200	3.200	2.125	4.500	<i>*Jeep Bolt Pattern</i>
R2-2-3201	Type 8	1.063	3.217-(O)	2.163-F	4	.490	2.780	2.780	2.125	3.938	<i>*Jeep Bolt Pattern</i>



*\*Wondering what you can do with all those Aluminum Drivshafts that use the Staked-In style U-joints? Rockford Drive Line has your solution...*

*The 430 Series flanges above will allow you to salvage the aluminum tubing and yokes by replacing the failed u-joint with a 430-14, along with the steel flange yoke. The U-Joints work with the aluminum weld yokes as long as they are not worn.*

*If your aluminum tubing or weld yokes are damaged the 1310 conversion flanges are the way to go... Pick up a set of flanges, build a replacement shaft and save BIG MONEY!!*



Make/Model	Year
Jeep Commander*	2006-10
Jeep Grand Cherokee*	2005-10